



ITE

INTEGRATION THROUGH EDUCATION

ANNEX 1

Example of the workshop process



Photo frame with glass



Wool

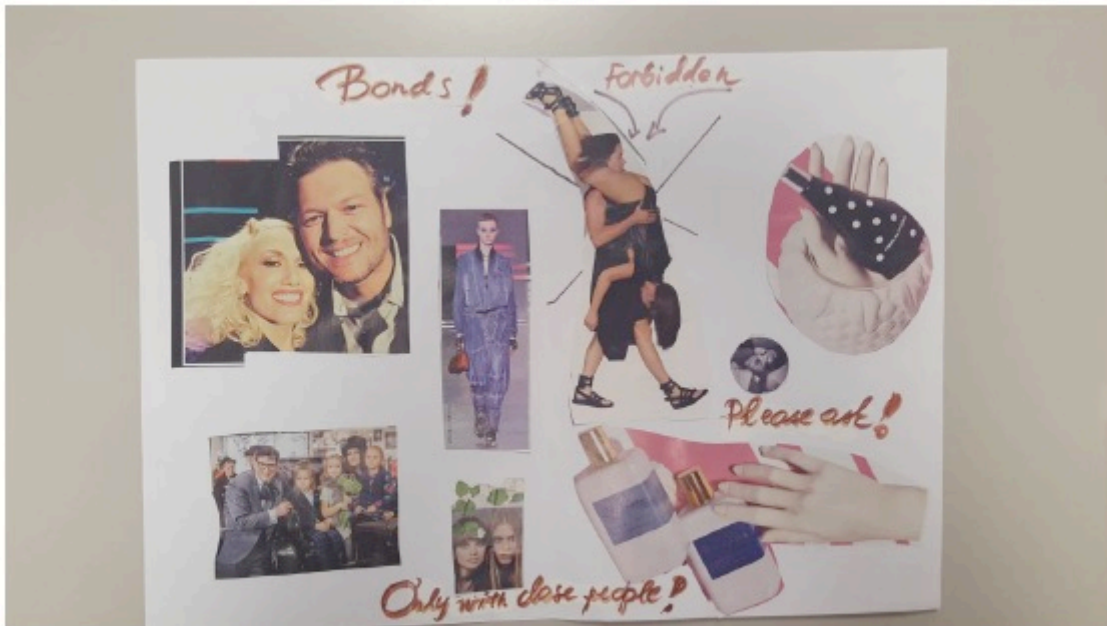


Example of personal items

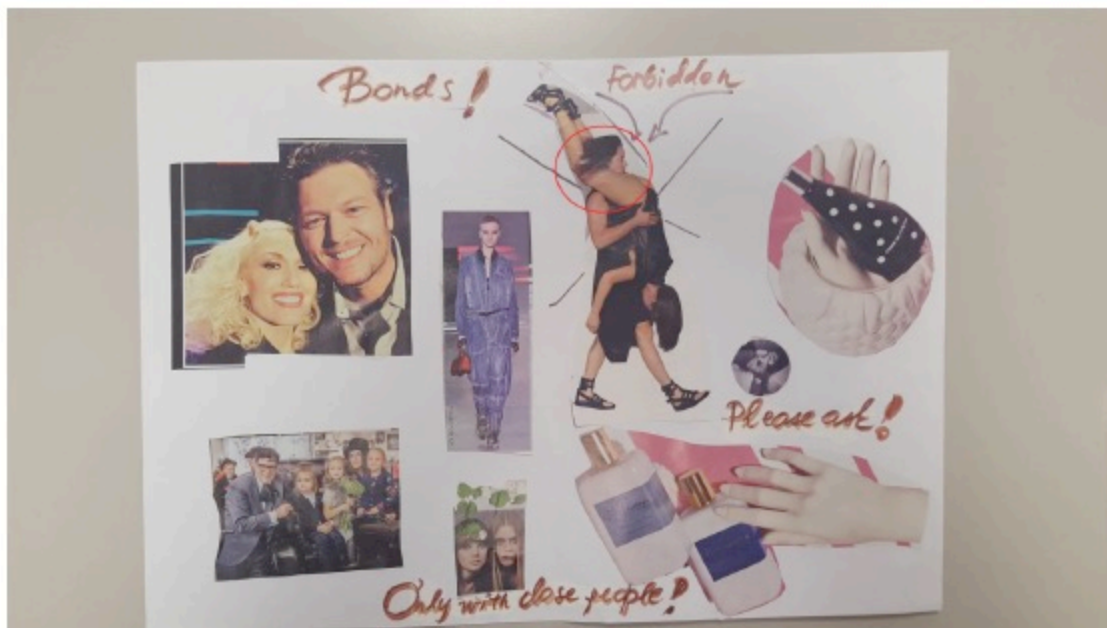


ITE

INTEGRATION THROUGH EDUCATION



Stage one: Creating a Self-collage



Stage three: cutting out a small part of preferred discomfort zone from the collage



ITE

INTEGRATION THROUGH EDUCATION



Stage three: Transformation (cut out piece from the collage)



Stage three: Transformation (putting wool, finding place for cut out piece, using personal items)